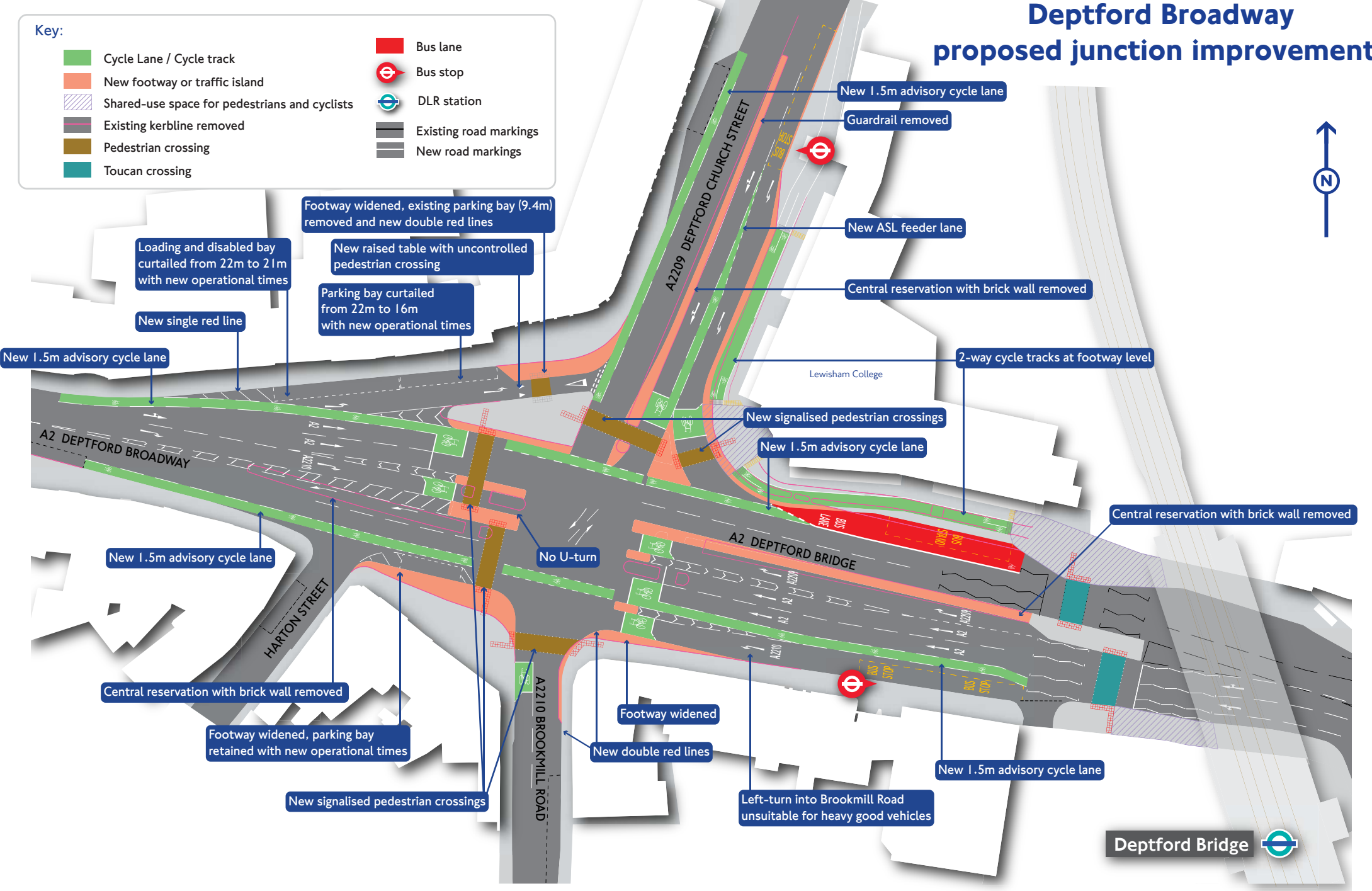


Deptford Broadway proposed junction improvements



Key:

- Cycle Lane / Cycle track
- New footway or traffic island
- Shared-use space for pedestrians and cyclists
- Existing kerbline removed
- Pedestrian crossing
- Toucan crossing
- Bus lane
- ⊖ Bus stop
- ⊖ DLR station
- Existing road markings
- New road markings



- Footway widened, existing parking bay (9.4m) removed and new double red lines
- Loading and disabled bay curtailed from 22m to 21m with new operational times
- New raised table with uncontrolled pedestrian crossing
- Parking bay curtailed from 22m to 16m with new operational times
- New single red line
- New 1.5m advisory cycle lane
- Central reservation with brick wall removed
- Guardrail removed
- New ASL feeder lane
- Central reservation with brick wall removed
- 2-way cycle tracks at footway level
- Lewisham College
- New signalised pedestrian crossings
- New 1.5m advisory cycle lane
- Central reservation with brick wall removed
- No U-turn
- New 1.5m advisory cycle lane
- Central reservation with brick wall removed
- Footway widened, parking bay retained with new operational times
- New signalised pedestrian crossings
- A2210 BROOKMILL ROAD
- Footway widened
- New double red lines
- Left-turn into Brookmill Road unsuitable for heavy good vehicles
- New 1.5m advisory cycle lane

Deptford Bridge