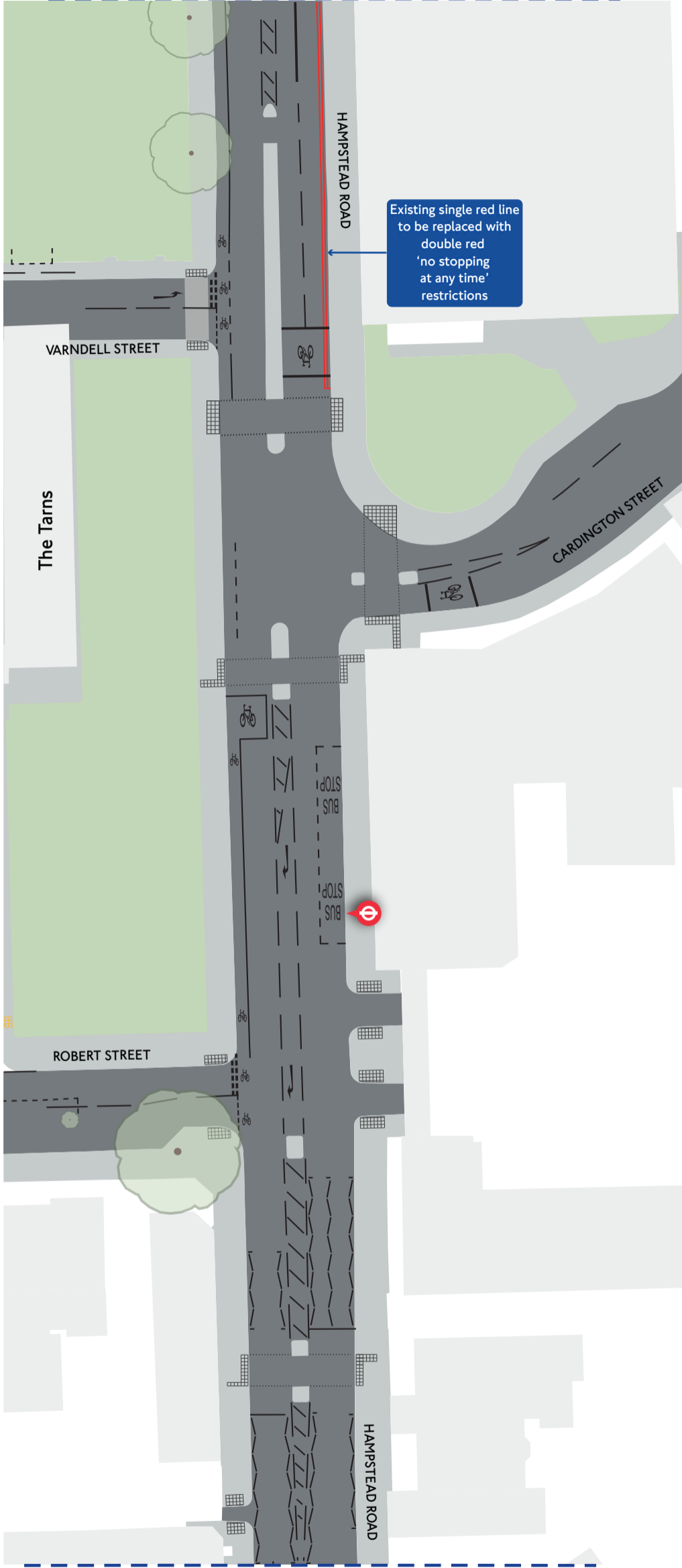




A400 Hampstead Road Bus reliability and road safety improvements - Plan 2

For continuation see plan 1

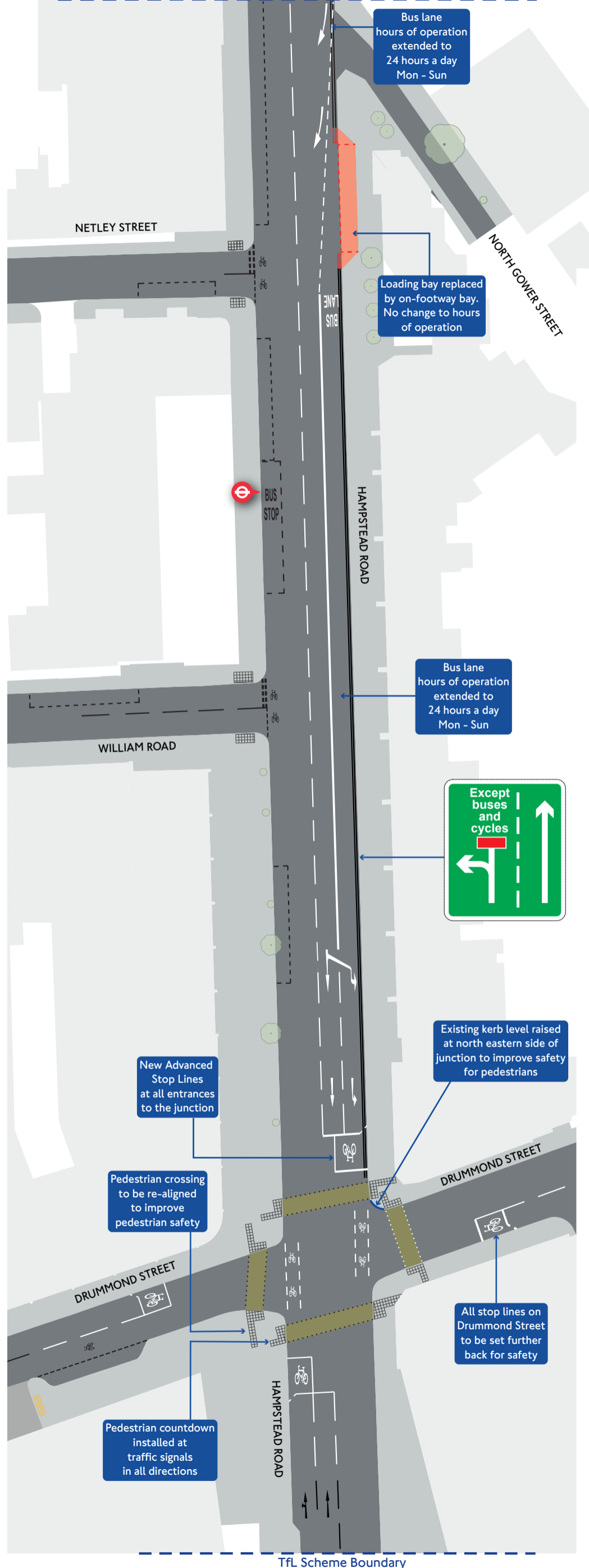


For continuation see right

Key:			
	Existing footway or traffic island		New white road markings
	Existing grass verge		New yellow road markings
	Existing road markings		New red road markings
	Existing kerb line removed		Bus stop
	New raised kerb		Existing tree
	New footway		
	Existing signalised pedestrian crossing		



For continuation see left



TfL Scheme Boundary